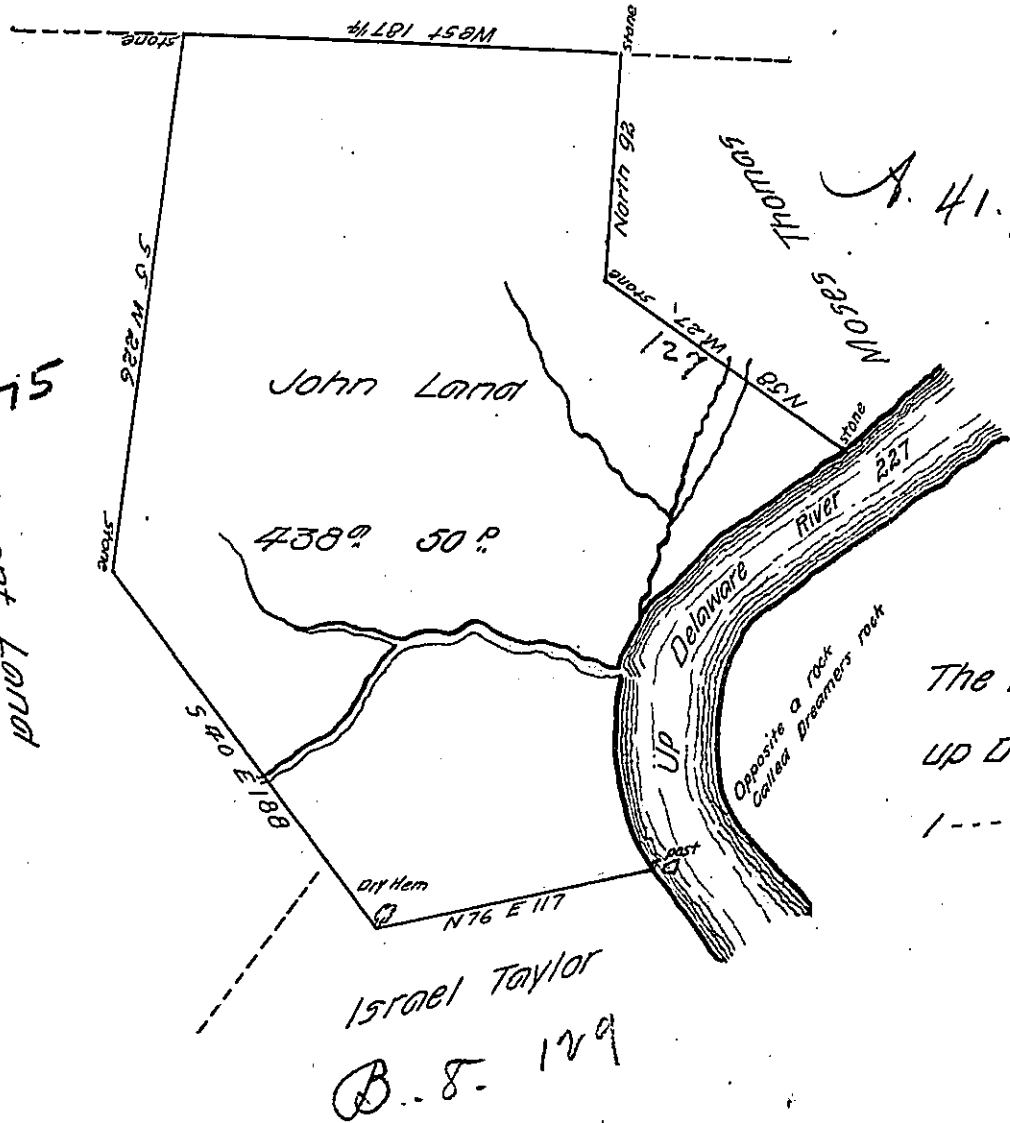


B-3-226

Proprietaries

A-40-275
VACANT LAND



The bearing & distance
up Delaware - are

1---	N 22	W 44
	N 6	E 64
	N 41	E 43
	N 54 1/2	E 76
		227

By Virtue of a warrant dated the 23rd July 1785 Surveyed the 9th September 1786 to John Land the above described tract of land situate at the West side of Delaware River at the mouth of Corking's creek a little below Coshichun in Northampton County containing four hundred and thirty eight acres fifty perches and the allowance of 6 P Cent &c.

To Daniel Brodhead Esq^r.
Surveyor General

P. Geo. Palmer D. S.

IN TESTIMONY that the above is a copy of the original remaining on file in the Department of Internal Affairs of Pennsylvania, made conformably to an Act of Assembly approved the 16th day of February, 1833, I have hereunto set my Hand and caused the Seal of said Department to be affixed at Harrisburg, this twenty third day of August 1905

George D. Brown
Secretary of Internal Affairs.